



Artist: Sangeeta Rekhi



2023-2024 in Review



Artist: Dan Tell

The work of the CLS takes place on the lands of the Coast Salish peoples who have been here for thousands of years. We know it is an honour to work, live and learn as settlers on these lands.

2023-2024 Board of Directors



Susan Regan
Acting Chair



Wesley Ma
Treasurer



Reba Noel
Director



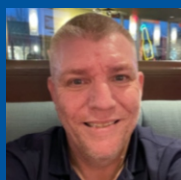
Penny Dale
Director



Christine Tunn
Director



Todd Stewart
Director



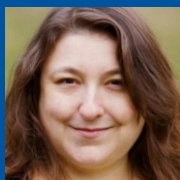
Sky Hendsbee
Director



Ming Chang
Director



Heather Russell
Director



Rachel Warick
Director



Communities where
every person lives
with dignity and
enjoys a full life.



Supporting people to
live as full citizens.



Respect
Community
Integrity
Accountability



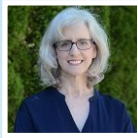
imagine it-live it

MOVING FORWARD

Message from the CEO and the Board Chair



Janice Barr
Chief Executive Officer



Susan Regan
Acting Board Chair



*We keep moving forward,
opening new doors,
and doing new things, because
we're curious and
curiosity keeps leading us
down new paths
– Walt Disney*



Housing

CLS has been providing housing services for over 47 years. This past year, the Ross Road home was demolished and is being rebuilt to be fully wheelchair accessible and another home will be rebuilt in the coming years. A home in Surrey was sold and a new one purchased which better meets the needs of the people we serve.

CLS formed a new partnership with New Vista to support low-income housing for seniors. CLS acquired a unit in one of the new developments and hope to acquire more in the coming years.

Accreditation

In November 2023, CLS was evaluated by CARF to ensure we meet all the standards of quality service. Like in previous evaluations, CLS received the highest level.



Building Connections



A new project started in 2023 for Self-Advocates to build connections with other Self-Advocate groups in the province. The group meets monthly.

Youth Employment



CLS is participating in a 3-year project to support youth with an intellectual disability gain employment. In 2023, 12 youth were supported in this project.

Advocacy



CLS participated in provincial advocacy efforts to improve health care services for adults with intellectual and developmental disabilities.



Artist: Rob Bell

STRATEGIC PLAN 2023-2027

This year, the leaders of CLS started making a plan for the future. This plan is like a roadmap that tells us where we want to go. It shows us what we want to achieve in the next 5 years.

In the early spring of 2022, CLS started talking to our community. We did this by having group discussions, talking to people, and asking questions through

surveys. We worked together with someone from outside the organization to do this. We spoke to Supported Individuals, families, employees, our leadership team, our Board of Directors, and other organizations that work with us.

With everyone's input, this is what we decided we will be working on for the next few years:

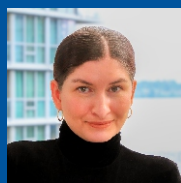
RECRUITMENT and RETENTION	HOUSING	CONNECTION	OPERATIONAL RESPONSIVENESS
<p>At CLS, we know that how we hire and keep our staff affects how we help individuals and families.</p> <p>We want new people to want to work with us, and we want the people who already work here to want to stay with us.</p> 	<p>We think that every person should have a home that is safe, friendly, and makes them feel respected.</p> <p>CLS is working on new and creative ways to provide homes that are just right for the people and families we help. Some people want homes where they can be more independent, and others want to stay where they are as they get older.</p> 	<p>The people we help have told us that they want more friends and connections.</p> <p>COVID-19 has made it tough to stay close to each other for the last three years. But CLS wants to make a fresh start. We will work together, be creative, and think carefully about how we can create programs and projects that help people make friends, stay connected, and feel like they belong.</p> 	<p>CLS is a big organization that helps a lot of people. As we look ahead, we want to make our work better and faster by updating and improving the way we do things.</p> <p>By making these changes, we can do an even better job of speaking up for and helping individuals and families.</p> 

Communities
where every person
lives with dignity and enjoys a full life

LEADERSHIP TEAM



Janice Barr
Chief Executive
Officer



Brenda Henderson
Chief Operating
Officer



Aaron McQueen
Chief Financial Officer



Marcela Herrera
Director of Programs



Max Sumner
Director of Programs



Elke Tilgner
Director of Programs



Lili Marian
Director of Programs



Rachel Pearsall
Director of Programs



Jessica Beasley
Director of Programs



Jasmine Sandhu
Finance Controller



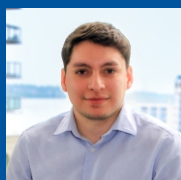
Judy Wilson
Manager of
Human Resources



Vicky Pascoe
Manager of
Administration



Scott Baitz
Manager of Information
Technology



Luis Mata
Manager of Property
and Fleet



Jade Braunwell
Manager of
Quality Assurance



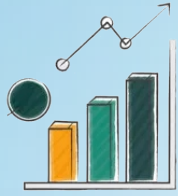
Alvin Sidhu
Accounting Manager



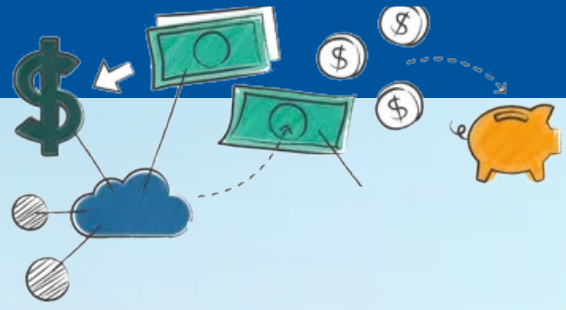
Samantha Dickson
Senior Project Manager



Artist: James Lash



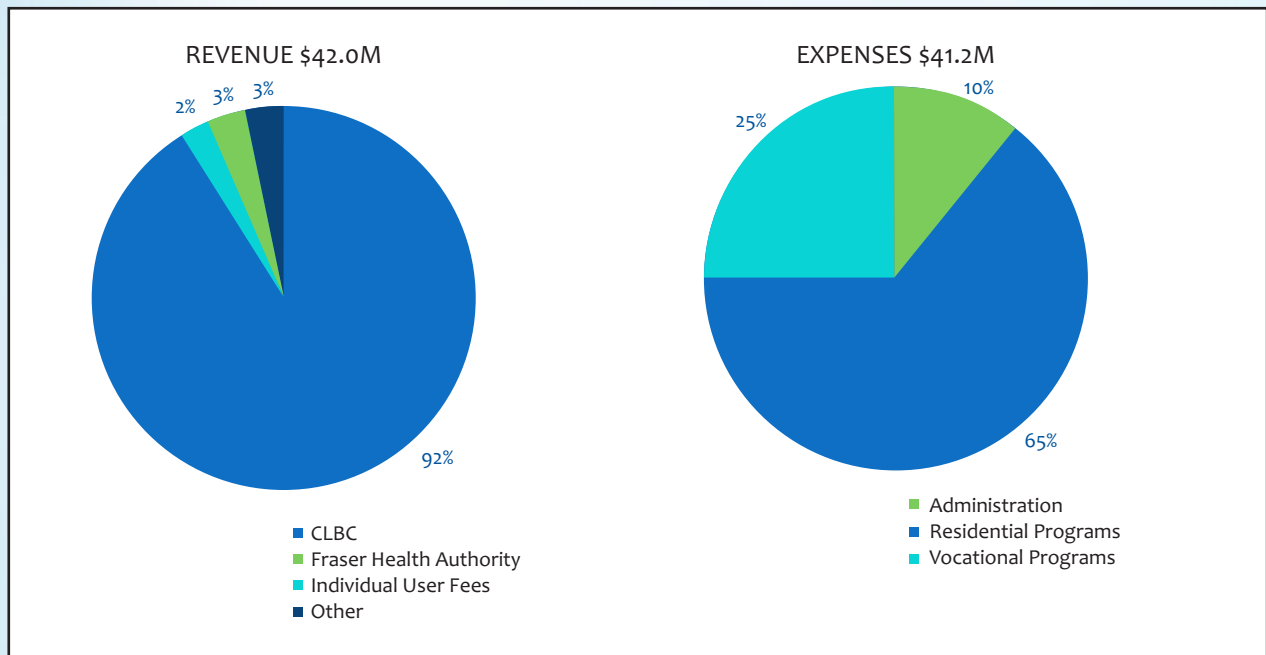
FINANCE



At the end of March 31, 2024
CLS Financial Status is summarized in these graphs:

Money Coming In

Money Going Out





CELEBRATIONS AND CONNECTIONS

CLS Sun Run - Over 70 runners, walkers and rollers participated in the Vancouver Sun Run in April 2023 and had a lot of fun completing the 5km or 10km loop.

Summer Picnic - Over 400 people attended our annual picnic in 2023 enjoying music, games, food, prizes and friendships.

A Very Elvis Christmas - a new event was held in December where Elvis made an appearance dancing, singing and handing out gifts to everyone.



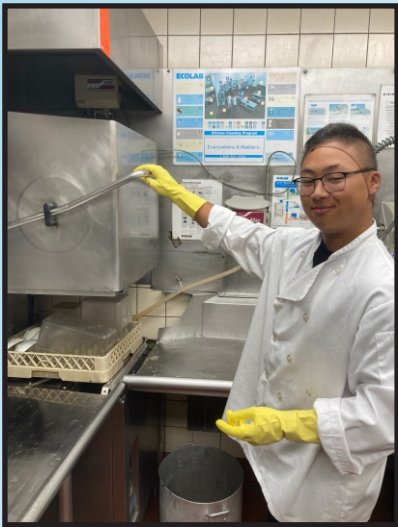
TRAINING REVITALIZATION

CLS does our best to train all our employees. In late 2023, we reviewed our training by talking with our employees.

The feedback we received helped to create a 3-year plan to improve our training for staff. There will be a focus on mental health, building friendships, dementia and other specific training topics relevant to the support we provide.



IMPACT 2.0 - YOUTH EMPLOYMENT



ROSS ROAD DEVELOPMENT



CLS SELF-ADVOCATES GROUP





Artist: Stephanie Davison



Artist: Kurt Linke



Artist: Jill McKenney



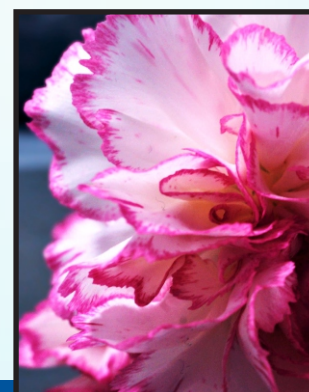
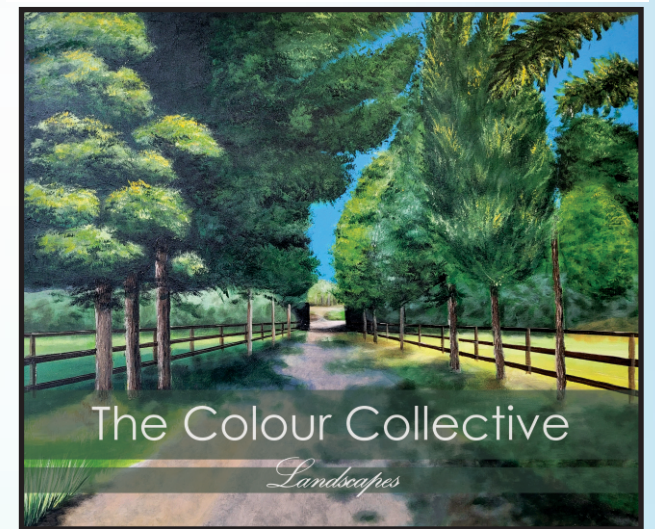
Belonging and feeling a part of the community is the studio's biggest inspiration for doing what they do. In 2023, the studio was involved in many activities:

- Market Place Conferences
- Single and group participant lessons
- Community events: Car Free Day, Langley Arts Alive and Surrey Pride
- Offering space in the studio to other artists
- Donating art pieces and/or funds raised to many organizations including the Christmas Bureau, Orange Shirt Day and Surrey Pride Society.
- Finalist in the Arts and Innovation Category at the Surrey Board of Trade for a Surrey Arts and Business Award



2023 was another busy year for the artists at PotterWorks:

- Amplified Voices art show at Il Museo Gallery in the Italian Cultural Centre
- Rob Bell's 'My Blended World' display at the New Westminster Public Library
- Linda Raudonus one woman show featuring her abstract paintings called 'It's a Thin Line'
- New Westminster Pride Festival booth
- Hosted Lamin Saine and his family from Gambia
- Inclusion Art Show
- Great Wall Tea, Steel and Oak, Simon's Soap Box collaborations
- NewWest TV documentary film
- Queen's Park Gallery show 'Winter Solstice'
- Colour Collective Calendar
- Colour Collective book 'Lanscapes'



Artist: Siobhan Harris



Artist: Dan Tell



Artist: James Lash



Artist: Sherri Lynn Seitz

In Memory

Caroline Herczeg
David Chappell
Sharon Wesko
Bernice Belcourt

HOW ARE WE DOING?

Every year, we ask individuals, families, and others who work with CLS how we are doing. They said these things about CLS:

These graphs show how many people are supported at CLS:

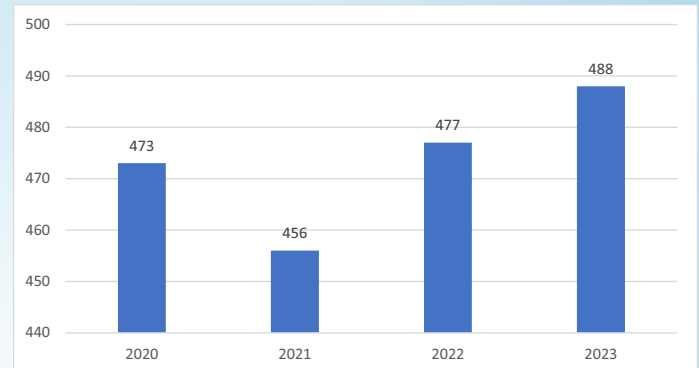
"My job coach has been amazing helping me get through my new step in life when I was looking at a career college to become a vet assistant, he helped me find a way to get my sponsorship and now I'm starting college at the end of the month."

"CLS's approach to engaging supported individuals and their families / personal support network members positions them as a key community inclusion leader in BC."

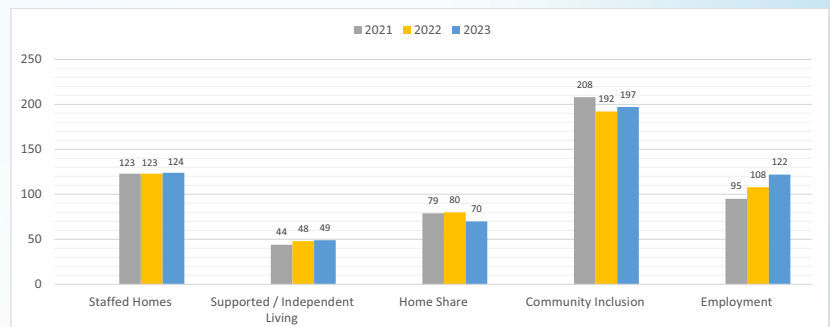
"I like when employees support me to go in community and help me towards my goals."

"I have so much appreciation to CLS for assisting my son patiently and respectfully."

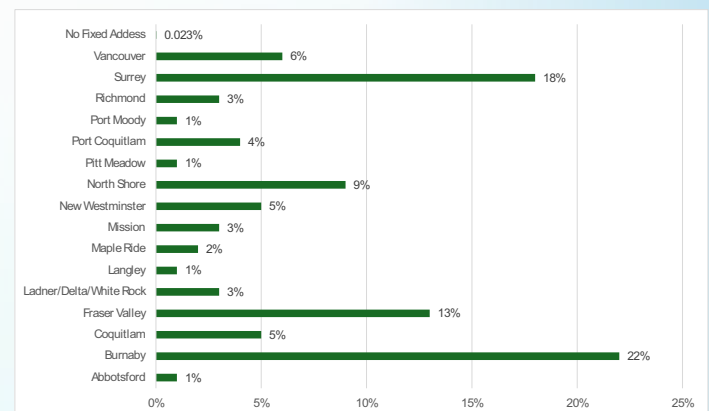
Total Number of Individuals



Total Number of Individuals in each program



Total Number of Individuals by City

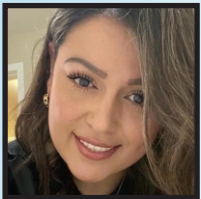


EMPLOYEE AWARDS

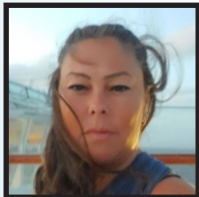
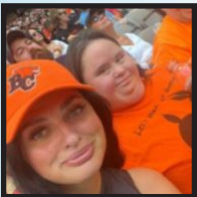
This year's Gala hosted over 100 employees and guests to celebrate employees who have reached milestone years of employment at the CLS as well as 4 awards. Congratulations to all recipients and thank you for your hard work and dedication to the CLS and Supported Individuals.

The Woodlands Parents' Group Award For Vision, Courage and Creativity

Congratulations to this year's winner
Nydia Soler Gomez.



The Community Integration & Inclusion Award is presented to someone who achieves success in community integration and inclusion in creative ways. Congratulations to this year's winners -
Joy Tully and Elysia Bernard.



Person Centred Active Support Awards are presented to staff who show active support, attitudes and passion to the Person Centered philosophy.

Congratulations to this year's winner - **June Sheck.**



TEAM Award

The winning teams this year are the
Neville Team and the Sardis Team.



Thank you to all of the individuals and organizations
who contributed to and supported CLS this past year



Ann Crocker
Bock Yip
Clinton Morrison
Gulf & Fraser Fisherman's Credit Union
Harry & Gillan Chiang
Harvey Hunt
Imagepath Printing Solutions Inc.
James Harris
Karen Auld
Sharon Moysey
Sylvia Walterhouse
Terrence Greenaway
Vancouver Rotary Club Foundation
Rebecca Phillips



Artist: Sangeeta Rekhi



7th Floor – 713 Columbia Street, New Westminster, BC, V3M 1B2
Direct 604.523.0303 Fax 604.523.9399
www.communitylivingsociety.ca