

# Handbook for Individuals and Families



## Home Share

### **Important**

This Handbook was printed on December 11, 2023.

Please note that contents may have changed and the most recent copy of this Handbook should be referenced on our Resource Portal on the CLS website.

<https://www.communitylivingsociety.ca/portfolio-items/important-information-about-cls/>

## About Home Share

In the Home Share program, we help you find a home where you are welcome to join in and share your life with others who are part of the household.



We don't just pick any household. We make sure we find individuals, couples or families that will be a good fit for you.

Each household will have one person who is the Home Share Provider. CLS works with them to be sure they can provide a good home for you.



# Finding the Right Home Share For You



LIKE



DON'T LIKE



LOVE



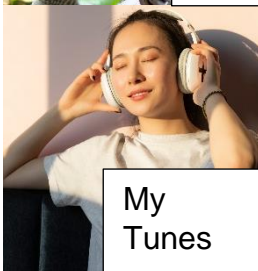
HATE

Before we help you find a home, our Home Share Coordinator will learn about you and what matters to you.

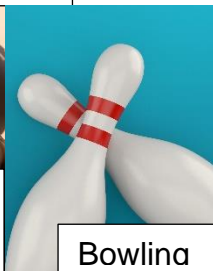
What kind of support is important to and for you to have a good life in your home.



My Job



My Tunes



Bowlina

How you like to spend your time at home and in the community.

## Choosing Home Share Providers

Each Home Share Provider and their household is screened by our Home Share Coordinator to be sure they meet important standards.



About our Home

Once approved we create a profile of the Home Share Provider and their home that will help you learn about the home, where it is, who lives there, the lifestyle they enjoy and what matters to them if they include someone new in their home.

We also create your profile that describes you and what is important to you. This helps any Home Share Provider to learn about you too.



## We want it to be a good match for everyone!



It is important to check out any Home Share Provider you are interested in first to see if it might be a good fit. We will try to find a few for you to choose from.



## Before making a decision

We encourage you to meet them first and see the home.

And spend time getting to know them.



Then, together, you can decide if it is the right fit for everyone.

Once you both agree it is a good fit, your selected Home Share Provider will sign an Agreement with CLS.



You also need to make an agreement to pay your monthly user fee to help cover your costs for living in this new household.

# Planning Your Move

Your Home Share Coordinator will work with you and your new Home Share Provider to plan your move.

## Hanging Out at your New Home

They can help you arrange to spend time in your new home before you move in, so you feel more comfortable with everyone and your new space.



## Organizing for your New Home



They can help you change your mailing address, phone number, figure out bus schedules, and learn the new neighbourhood.



## Moving - Planning Your Big Day

They can help you plan what you need to bring to your new home, and when and how you will move.



It is good to make a list of everything you take to your new home. This is called your ***Personal Inventory***. It helps you keep track of all your special things.

## Establishing Yourself in Your New Home

It is important to decide on some rules for how you will live together that makes sure everyone feels respected and included.



### *Our Commitments*

Respect each other

Tidy up our messes.....

## Living a Good Life Together

Your Home Share Coordinator will be visiting with you and your Home Share Provider to support you to have a good life together.



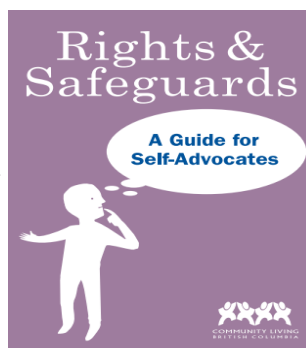
They will meet with you and your Home Share Provider to talk about how things are going.



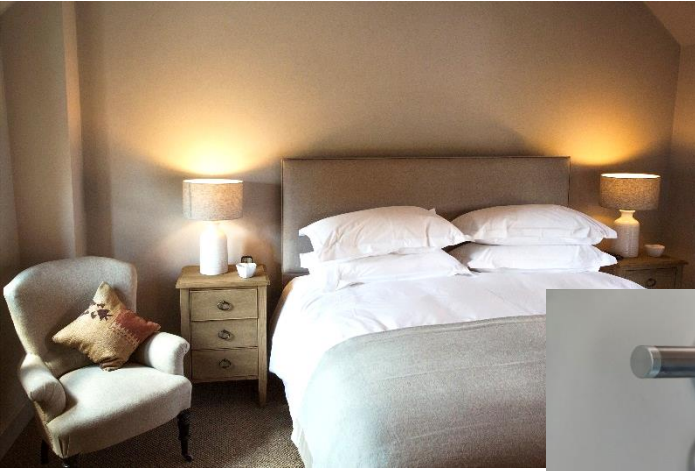
These are called **Monitoring Visits**. They happen regularly in your 1<sup>st</sup> year and at least 4 times each year after that. We want to be sure your home is safe, comfortable and provides you with a good quality of life.

The Coordinator will spend time to be sure:

Your rights are being respected in your home.



You are respecting the rights of others in your home.



Everyone feels comfortable that their private spaces are respected.



You are getting the type and level of support that works for you with any activities outlined in your **Care Plan**.

Personal Care



Medications



Your money

You have places in your home where you feel comfortable to visit with family and friends if you want.



You are included as a member of the household enjoying time together, looking after the home and learning new skills.

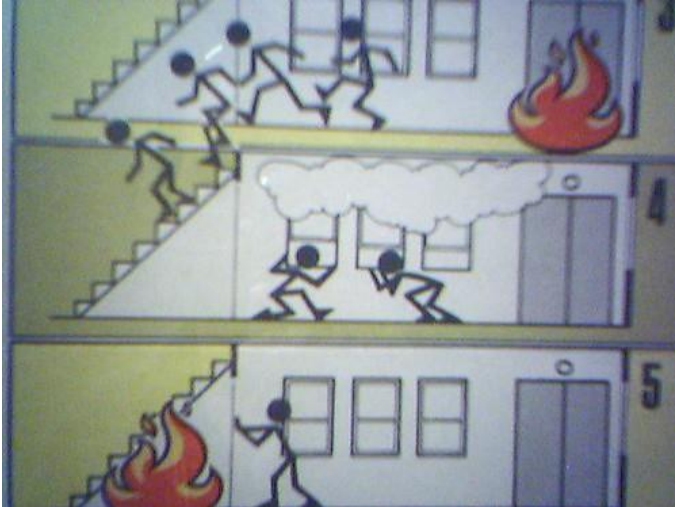


You enjoy opportunities to be in the community.



You feel comfortable hanging out at home with others or on your own and feel like you are important household member.





You have a plan and know what to do in an emergency, and practice with others in the house.



You feel supported if you are upset.



You feel healthy and safe in your home.

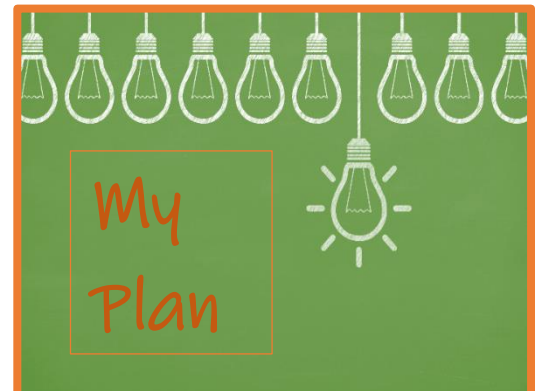
Our Home Share Coordinators are important safeguards for you to help you live your best life in your home.

They will make sure you and your Home Share Provider have their contact information so you can contact them if you have questions or concerns.



They will also provide you with numbers you can call in an urgent or emergency situation where you need help or support right away.

Home Share Coordinators spend time with you, your Home Share Provider, and others important to you to make a plan for your life and map out the support you want with the goals you set.



*Individual Service and Quality of Life Plan (ISQLP)*

- My Care Plan**
- ▶ Medication Reminders
  - ▶ Helping me with banking and managing my money
  - ▶ Helping me get to work on time

They also help to make sure your **Care Plan** is up to date so that the areas where you need and want support are clear.

# Covering Your Costs and Managing Your Money

You are responsible to pay a **User Fee** each month to your Home Share Provider to help pay for rent, food, and other household costs.



To make it easy, you can have your **User Fee** sent directly from your PWD Benefit, or from your bank account, to the Home Share Provider each month.

You are also responsible for all personal costs for clothing, personal care, or recreational and community activities.





Managing your money will be important so you can pay for the things you need and want. Be sure to let us know what kind of support you want with your money so we can put this in your **Care Plan**.

If you decide you want your Home Share Provider to help you with your money, we have important rules we have to follow to make sure your money is safe.



Be sure to ask your Home Share Coordinator if you have any questions about this, or if you want to change how your Home Share Provider supports you so your **Care Plan** can be updated.

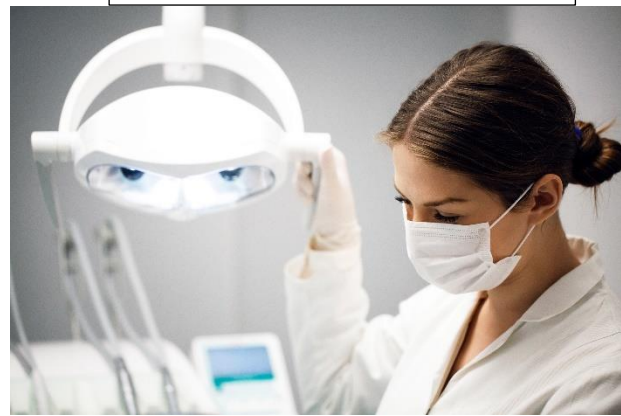
# Looking after your Health

Your Home Share Provider will also help you set up regular Health Care Check-ups



Doctor

Dentist



Eye Check up



Hearing Test

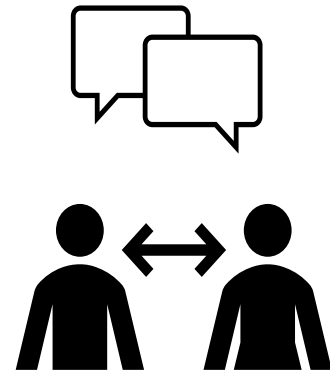


## Telling Us If Something Isn't Working



Make sure to tell us if something isn't working in your home so we can work with you and your Home Share Provider to sort it out.

We encourage you to talk with your Home Share Provider first so they know and can help fix things. Talk with your Home Share Coordinator if you feel uncomfortable doing this.



Your Home Share Coordinator is there to help you. Nothing bad will happen to you if you tell us something that is bothering you about your home.

Find out more about making a complaint in our ***About CLS Handbook.***

## Changing or Ending Services

Your agreement to live with a Home Share Provider has some important rules about what happens if either of you no longer want to live together.

If you choose to end your time living with a Home Share Provider.

*You must give  
them 30*

**NOTICE**

*They must  
give you  
90 Days*

**NOTICE**

If the Home Share Provider decides they no longer want to share their home with you.

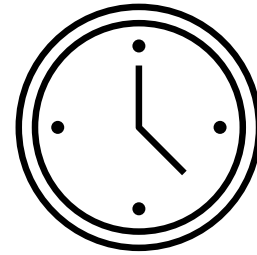
If an emergency happens and your Home Share Provider is no longer available for you, your Home Share Coordinator will talk with Community Living British Columbia (CLBC) to find an emergency place for you to live until a new home can be found.



**Back-  
up Plan**

## Finding a New Home Share

If, for any reason, you need to find a new Home Share arrangement, Your Home Share Coordinator will work with you like before to find a good fit.



**Like Before, this may take time.**

## Saying Goodbye

There may be reasons you decide you do not want to live in any CLS Home Share and will be moving on from CLS.



If you like, CLS can work with you and CLBC to help you make the right move for you.



**We are here to support you if we can.**