



2022-2023 in Review



Art by James Lash



Art by James Lash

2022 - 2023 Board of Directors



Darius Maze
Chair



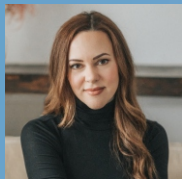
Susan Regan
Vice Chair



Wesley Ma
Treasurer



Reba Noel
Director



Penny Dale
Director



Vikas Patel
Director



Todd Stewart
Director



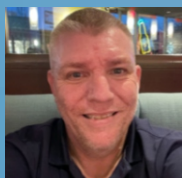
Christine Tunn
Director



Susan Powell
Director



Ming Chang
Director



Sky Hendsbee
Director



Communities where
every person lives
with dignity and
enjoys a full life.



Supporting people to
live as full citizens.



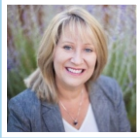
Respect
Community
Integrity
Accountability



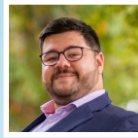
imagine it-live it

The secret of success is focus on purpose - Thomas Edison

Message from the CEO and the Board Chair



Janice Barr
Chief Executive Officer



Darius Maze
Board of Directors Chair



Housing

Thanks to our collaboration with the New Chelsea Society, five individuals who receive support from CLS achieved their goal of living independently. They moved into new apartments in Vancouver, making their dreams come true.



Remote Supports

This project aims to explore how technology can be used to provide support to people with intellectual disabilities who live on their own in the community. It's a three-year pilot project and we have started it with 4 individuals from CLS. We hope to expand this to more people in the coming years.



Theatre Project

In November 2022, after two years of hard work, the "We Deserve to Work" play was performed in front of an excited audience at the Massey Theatre.

The play was entertaining but it also sent a message about how important work is for everyone, including people with intellectual disabilities.



Youth Employment

Research shows that when people start working early in life, they are more likely to have a strong connection to the workforce throughout their lives. Unfortunately, individuals with intellectual disabilities often don't have the chance to work until they become adults.

CLS is working on a three-year project to support young people with intellectual disabilities in finding summer jobs.

We Deserve to Work



STRATEGIC PLAN 2023-2027

This year, the leaders of CLS started making a plan for the future. This plan is like a roadmap that tells us where we want to go. It shows us what we want to achieve in the next 5 years.

In the early spring of 2022, CLS started talking to our community. We did this by having group discussions, talking to people, and asking questions through

surveys. We worked together with someone from outside the organization to do this. We spoke to Supported Individuals, families, employees, our leadership team, our Board of Directors, and other organizations that work with us.

With everyone's input, this is what we decided we will be working on for the next few years:

RECRUITMENT and RETENTION	HOUSING	CONNECTION	OPERATIONAL RESPONSIVENESS
<p>At CLS, we know that how we hire and keep our staff affects how we help individuals and families.</p> <p>We want new people to want to work with us, and we want the people who already work here to want to stay with us.</p> 	<p>We think that every person should have a home that is safe, friendly, and makes them feel respected.</p> <p>CLS is working on new and creative ways to provide homes that are just right for the people and families we help. Some people want homes where they can be more independent, and others want to stay where they are as they get older.</p> 	<p>The people we help have told us that they want more friends and connections.</p> <p>COVID-19 has made it tough to stay close to each other for the last three years. But CLS wants to make a fresh start. We will work together, be creative, and think carefully about how we can create programs and projects that help people make friends, stay connected, and feel like they belong.</p> 	<p>CLS is a big organization that helps a lot of people. As we look ahead, we want to make our work better and faster by updating and improving the way we do things.</p> <p>By making these changes, we can do an even better job of speaking up for and helping individuals and families.</p> 

**Communities
where every person
lives with dignity and enjoys a full life**

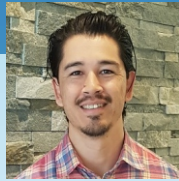
Leadership Team



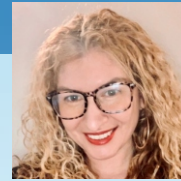
Janice Barr
Chief Executive
Officer



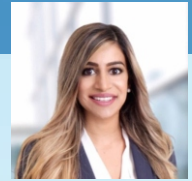
Gillian Rhodes
Chief Operating
Officer



Aaron McQueen
Chief Financial
Officer



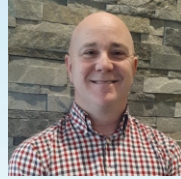
Brenda Henderson
Director of Policy
and Practice



Jasmine Sandhu
Finance Controller



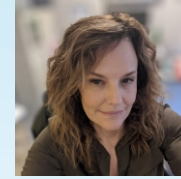
Marcela Herrera
Director of Programs



Max Sumner
Director of Programs



Elke Tilgner
Director of Programs



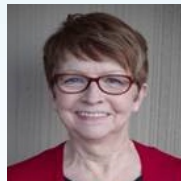
Heather Jones
Director of Programs



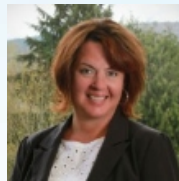
Rachel Pearsall
Director of Programs



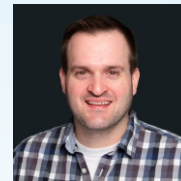
Lili Marian
Director of Programs



Judy Wilson
Manager of
Human Resources



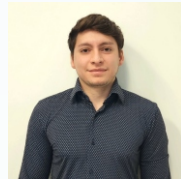
Vicky Pascoe
Manager of
Administration



Scott Baitz
Manager of Information
Technology



Winston Sicat
Manager of Finance
and Payroll



Luis Mata
Manager of
Property and Fleet



Jade Braunwell
Manager of
Quality Assurance



Photography by Sheri Lynn Seitz



Art By Dan Tell



Carol enjoys the view from her new apartment



Neville Guys in Nashville



Derek Voting

Organizational Review

Over the last three years, CLS has been making changes to how we manage things on the front lines. We did this after getting advice from outside experts and listening to feedback from the people we support, our employees, families, and networks.

This has been a big achievement for CLS, and it took a lot of work.

During this review, we also found that we needed more help in some areas. So, we added some important positions in Information Technology and Operations. This helps us support the organization better and, most importantly, the people we support.

Returning to Normalcy

Some favourite events and activities returned to in-person gatherings this year.

- May 2022 - CLS Employee Boat Cruise!
- August 2022 - Annual Family Picnic at the Scandinavian Community Centre. It was our biggest turn out!
- March 2023 - Annual Employee Awards Gala.
- April 2023 - Vancouver Sun Run where 71 supported individuals and staff participated.
- April 2023 - Annual Children's Spring Party



Art by Mridu Sood



Art by Harpreet Arneja



Art by Ashley Dheil



2022 was a busy and productive year for the Studio. The artists were involved in many community events and activities.

- Adopt-a-Street Program
- Exhibition at Newton Cultural Centre
- Community Inclusion Month Open House
- End Racism and Build Peace exhibition by Global Peace Alliance
- My Heritage exhibition



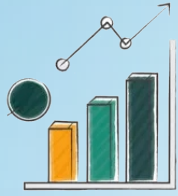
PotteryWorks was able to return to its busy pre-pandemic schedule in 2022. This included workshops and many in-person art shows.

- Inclusion Art Show
- PotteryWorks at the Plaskett
- West of Main Artwalk
- Disability Work Fair at New Westminster Library
- Winter Solstice at the Arts Council of New Westminster in Queens Park
- Your Eyes My Vision project sponsored by the Vancouver Foundation
- Journey to Community exhibit at the Port Moody Station Museum

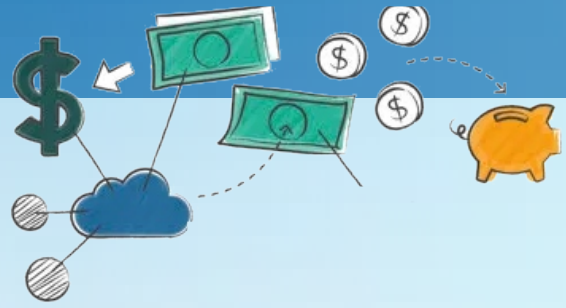
PotteryWorks set a new record at the Inclusion Art Show with one-day sales totalling \$3,500.00. The late Tom Mackie's painting was chosen as the image for the show's promotional material, and he was remembered and honoured for his significant contributions at the event.

Simon, who used to be a drop-in artist at the PotteryWorks studio for many years, along with his sister, has launched a successful soap company. PotteryWorks has collaborated on creating soap dishes and containers for Simon's products.





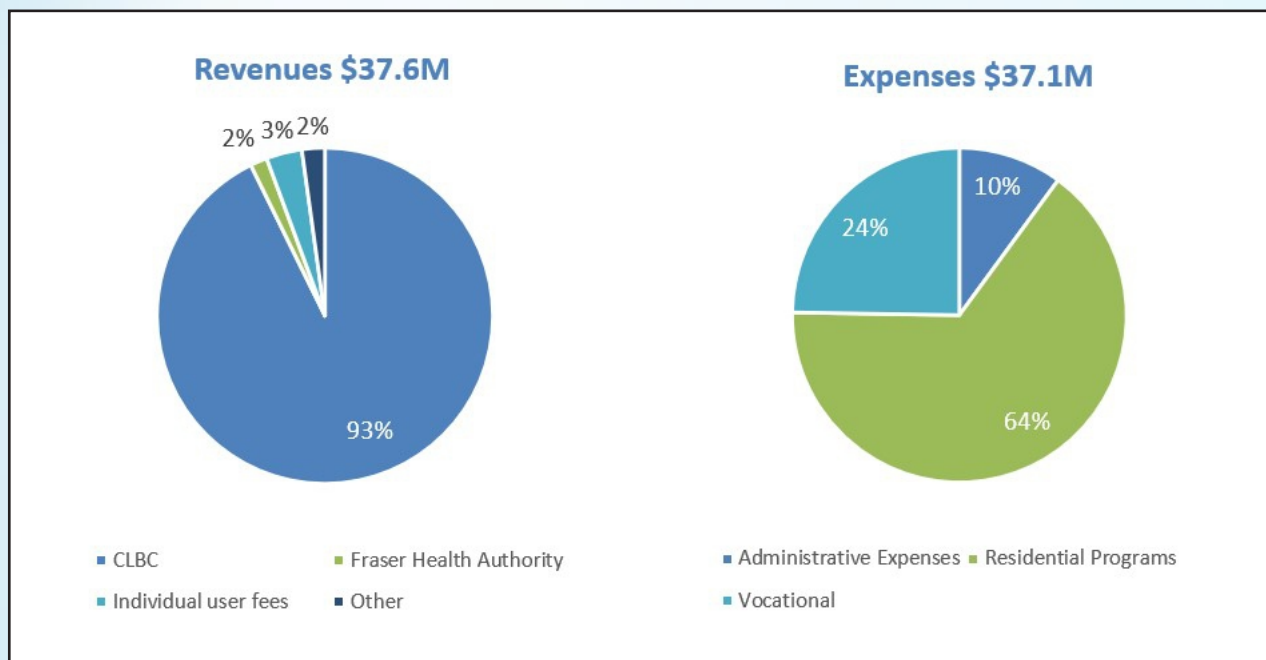
FINANCE

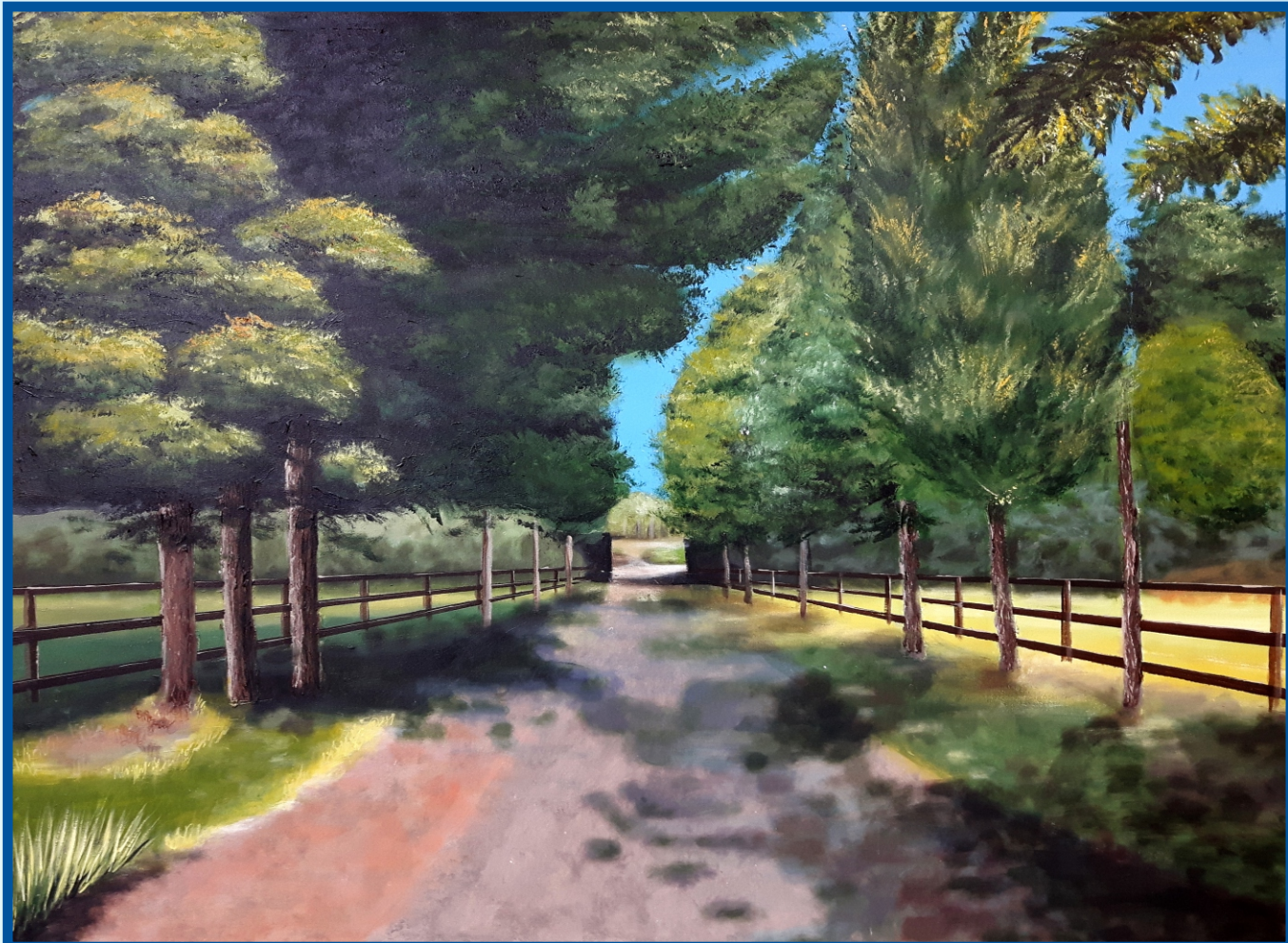


At the end of March 31, 2023
CLS Financial Status is summarized in these graphs:

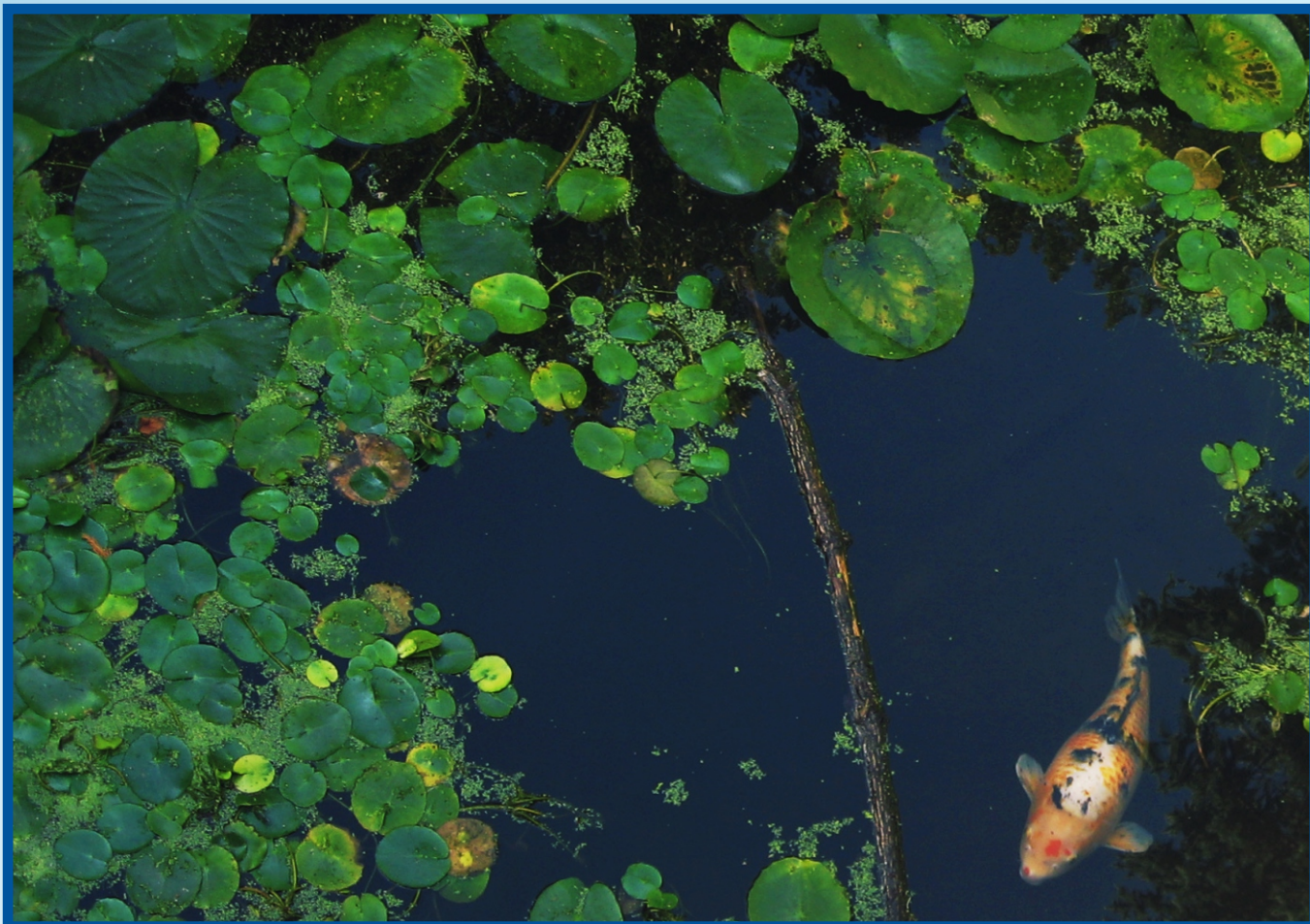
Money Coming In

Money Going Out





Art by James Lash



Photography by Siobhan Harris

In Memory

Eileen Postnikoff
Hugo Faragher
Nancy Wilson
Tom Mackie
Chris Huettl
Patricia (Patsy) Hannah
Christiane Pozzato
Grant Thompson
Harpreet Dhillon
Kelley Miller
Raymond Nelson
Bill Morrison

How are we doing?

Every year, we ask individuals, families, and others who work with CLS how we are doing. They said these things about CLS:

They are always communicating with families via The Communicator, Family Matters, etc. This makes me feel more connected and open to the society as a whole.
Family member

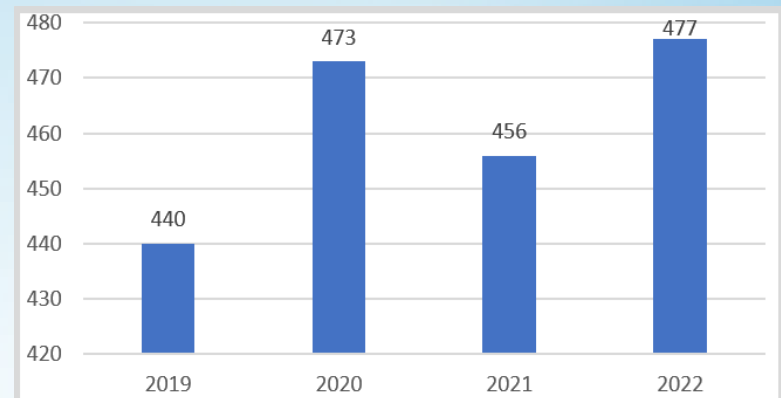
"CLS provides me a very good accommodation, supported my best interest of my well being to live in an environment that promotes my health, safety and dignity."

My son with a disability (Autism) got support from CLS and a job and continuous support for him to succeed on a long term basis. We could not come to think that my son would be employable unless there was a support from CLS. Thank you!

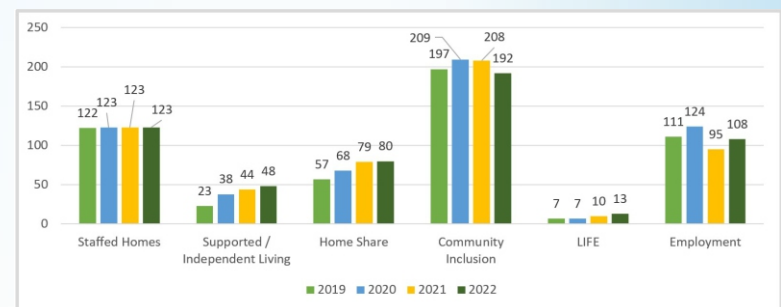
The CLS Employment Services Program has been wonderful and I would recommend the program to employers.
Employer – Employment Services

These graphs show how many people are supported at CLS:

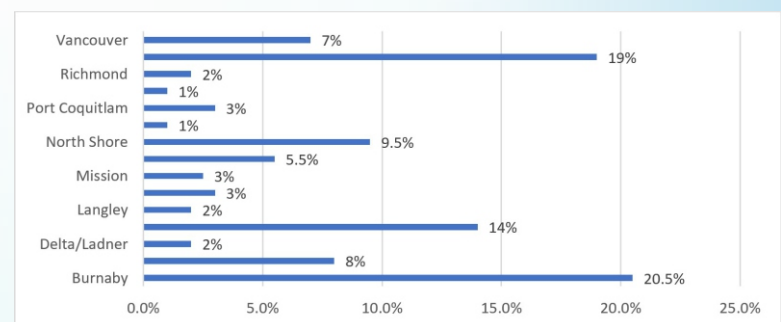
Total Number of Individuals



Total Number of Individuals in each program



Total Number of Individuals by City



Employee Awards

For the 2022 awards, we were finally able to come together in person again to celebrate employees who were nominated by their peers for achievements, and employees who reached milestone years of employment at the Community Living Society. We had a wonderful evening of music, food and fun at the Inn at the Quay on March 7th. Congratulations to all nominees and recipients.

The Woodlands Parents' Group Award For Vision, Courage and Creativity

Congratulations to this year's winners
Kelly Hooper and Christina Caampued.

The Community Integration & Inclusion Award

is presented to someone who achieves success in community integration and inclusion in creative ways. Congratulations to this year's winner
Elena Unabia.

Person Centred Active Support Awards

are presented to staff who show active support, attitudes and passion to the Person Centered philosophy. Congratulations to this year's winners
Slavka Obretenov Bohac and Laura Pedersen.

TEAM Award

The winning team this year is the Maginnis home employees.

Caroline Sarich, Nydia Soler Gomez, Kelly Hooper, Cristina Caampued, Lina Hemet and Rachel Pearsall.



TEAM Award: Maginnis Home Employees

Thank you to all of the individuals and organizations
who contributed to and supported CLS this past year



Donors 2022

Harvey and Mary Ellen Hunt
Karen Auld
Terrance Greenaway
Ann Louise
James Harris
Cloud 9
Wilmer Fawcett
Loredana Sanvido
Bock Yip
Sylvia Walterhouse
Rebecca Phillips
Bud Johnson



7th Floor – 713 Columbia Street, New Westminster, BC, V3M 1B2
Direct 604.523.0303 Fax 604.523.9399
www.communitylivingsociety.ca



Photography by Dan Tell